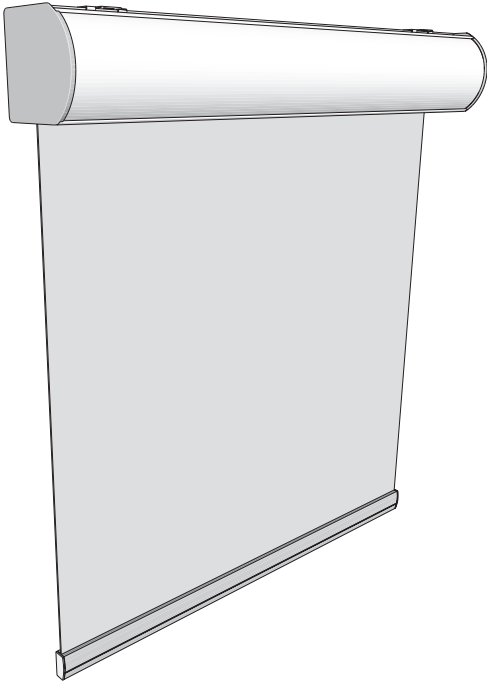




TIGER WINDOW FASHIONS

Cassette 100/120 Motorized Roller Shade Installation Instructions

Step-by-step instructions for proper installation of your new roller shade.



Getting Started

Carefully unpack your shade(s) and check to make sure you have all of the following installation parts for each of your shades. It is recommended to read this manual before proceeding with the installation.

Parts Included:

- Mounting Bracket Screws
- Mounting Brackets (x2)

Note:

The mounting brackets must be securely attached to the mounting surface. If your screws do not hit wood studs, you may have to use a different fastener available at any hardware store.

Recommended Tools:

- Drill with 1/8" bit
- Phillips screwdriver
- Tape Measure

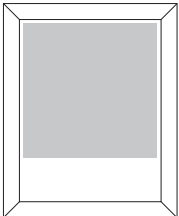
ATTENTION. According to the Window Covering Manufacturers Association Inc., all labels must not be removed from the product.

Note: For thicker fabrics or longer lengths you may be provided with the larger 2" Skyline bracket or the Large Tiger Designer Metal Bracket to accommodate the larger roll diameter. In this case please refer to the minimum mounting depth requirement chart.

Care and Cleaning

Minimal care and cleaning is needed to maintain the beauty of your shades. **To vacuum:** Use a hand held, low suction vacuum. **To dust:** Use a soft, clean cloth or feather duster. If using a mild cleaning solution, test on small area of fabric to make sure there will be no discoloration prior to application.

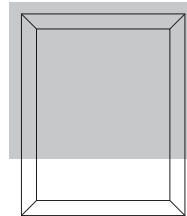
Step 1 - Select Mounting Option



Inside Mount (IB)

Inside mount installations attach the brackets to the window frame, window molding, wall or ceiling, as shown. Internal shade roll brackets are universal so clutch mechanism may be mounted on either side.

Minimum mount depth (100):	1-1/2 in. (38mm)
Minimum mount depth (120):	3 in. (76mm)
Minimum flush mount depth (100):	3-1/4 in. (83mm)
Minimum flush mount depth (120):	3-1/4 in. (83mm)



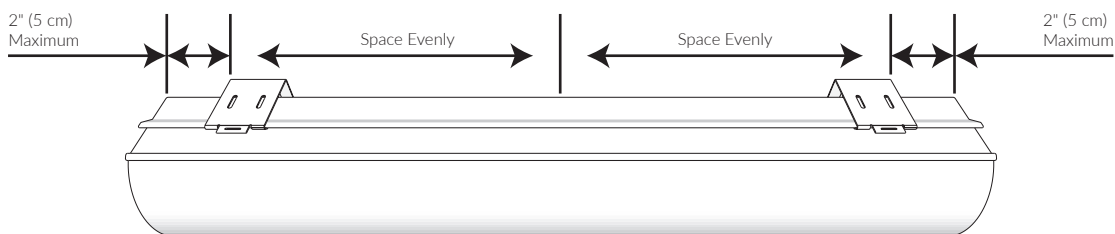
Outside Mount (OB)

Outside mount installations attach the brackets to the window casing, frame, molding, wall or ceiling, as shown. Internal shade roll brackets are universal so clutch mechanism may be mounted on either side.

Minimum flat vertical surface (100):	1-1/2 in. (38mm) wide
Minimum flat vertical surface (120):	1 in. (25mm) wide
Projections (100):	3-3/4 in. (95mm)
Projections (120):	4-1/4 in. (108mm)

Step 2 - Mark Position of Mounting Brackets

Before mounting the brackets to the wall or window frame, position the brackets on the cassette and mark the location of the mounting brackets making sure that the outside brackets are no further than 2 inches (5 cm) from the ends of the headrail. On wide shades, space the additional bracket(s) at equal intervals.





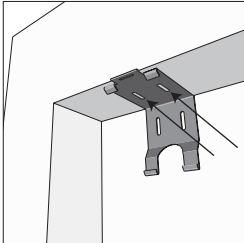
TIGER WINDOW FASHIONS

Cassette 100/120 Motorized Roller Shade Installation Instructions

Step-by-step instructions for proper installation of your new roller shade.

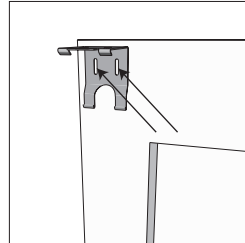
Step 3 - Install Mounting Brackets

Inside Mount



Remove the brackets from the headrail assembly. Align each bracket with your location marks and while holding the bracket in place, mark the mounting screw locations in the top of the bracket with a pencil. Pre-drill marked locations using a 1/8 in. drill bit. Attach the brackets securely using the supplied mounting screws and a Phillips screwdriver.

Outside Mount

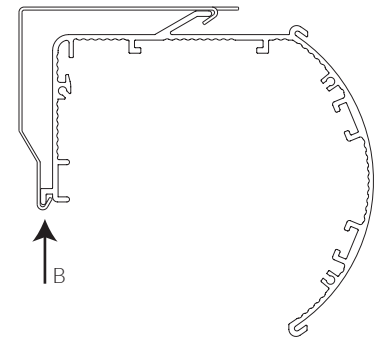
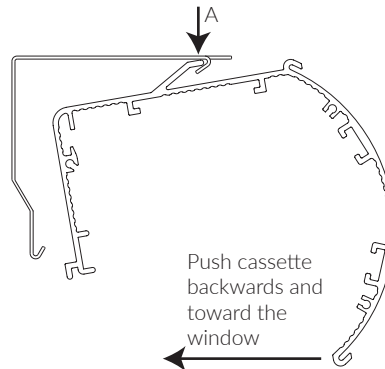


Remove the brackets from the headrail assembly. Align each bracket with your location marks and while holding the bracket in place, mark the mounting screw locations in the back of the bracket with a pencil. Pre-drill marked locations using a 1/8 in. drill bit. Attach the brackets securely using the supplied mounting screws and a Phillips screwdriver.

Note: The mounting brackets must be securely attached to the mounting surface. If your screws do not hit wood studs, you may have to use a different fastener available at any hardware store.

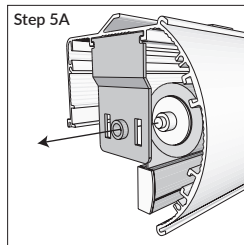
Step 4 - Mount the Headrail

Position the headrail with the front panel (A) resting on the top lip of all brackets. Push the bottom front of the headrail firmly backwards and toward the window until the lip on the rear of the headrail engages the bracket and snaps into place, (B) as shown.

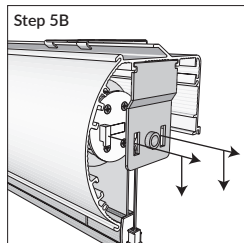


Step 5 - Inserting the Shade

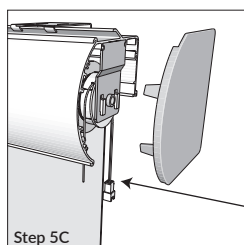
Step 5A: Insert the spring loaded pin end into the round hole of the mounting bracket. Pushing the pin end towards its bracket, insert the hooks on the motor side straight into the two slots in the mounting bracket.



Step 5B: Once the two hooks are through the slots, gently pull down on the motor until the two hooks have locked securely to the bracket. The bracket hooks of the motor housing should point straight down.



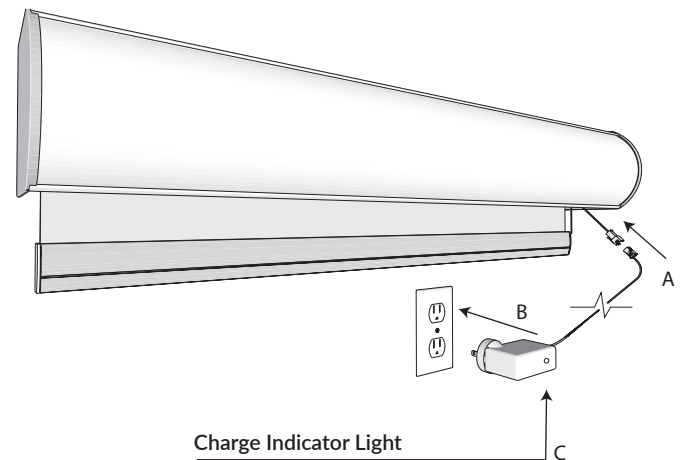
Step 5C (Optional Outside Mount): Slide bracket covers over mounting brackets until they lock securely into place.



Note: Roller shades are not meant to be lowered past the ordered length and will come with additional material that is automatically added in length to conceal the roller tube and to help secure the fabric to the roll.

Step 6 - Battery Charger

Charge for 6 hours minimum before use. Plug the Charger Cord connector into the shade Charger Cord connector (A). Plug the charger into the wall outlet (B), the Indicator light (C) on the charger will turn green when the battery is fully charged.



Charge Indicator Light

Step 7 - Controlling the Shade

Refer to the instructions included with your Paradigm Remote or Wall Switch for information on programming and operating the Automate™ motorized shade.